

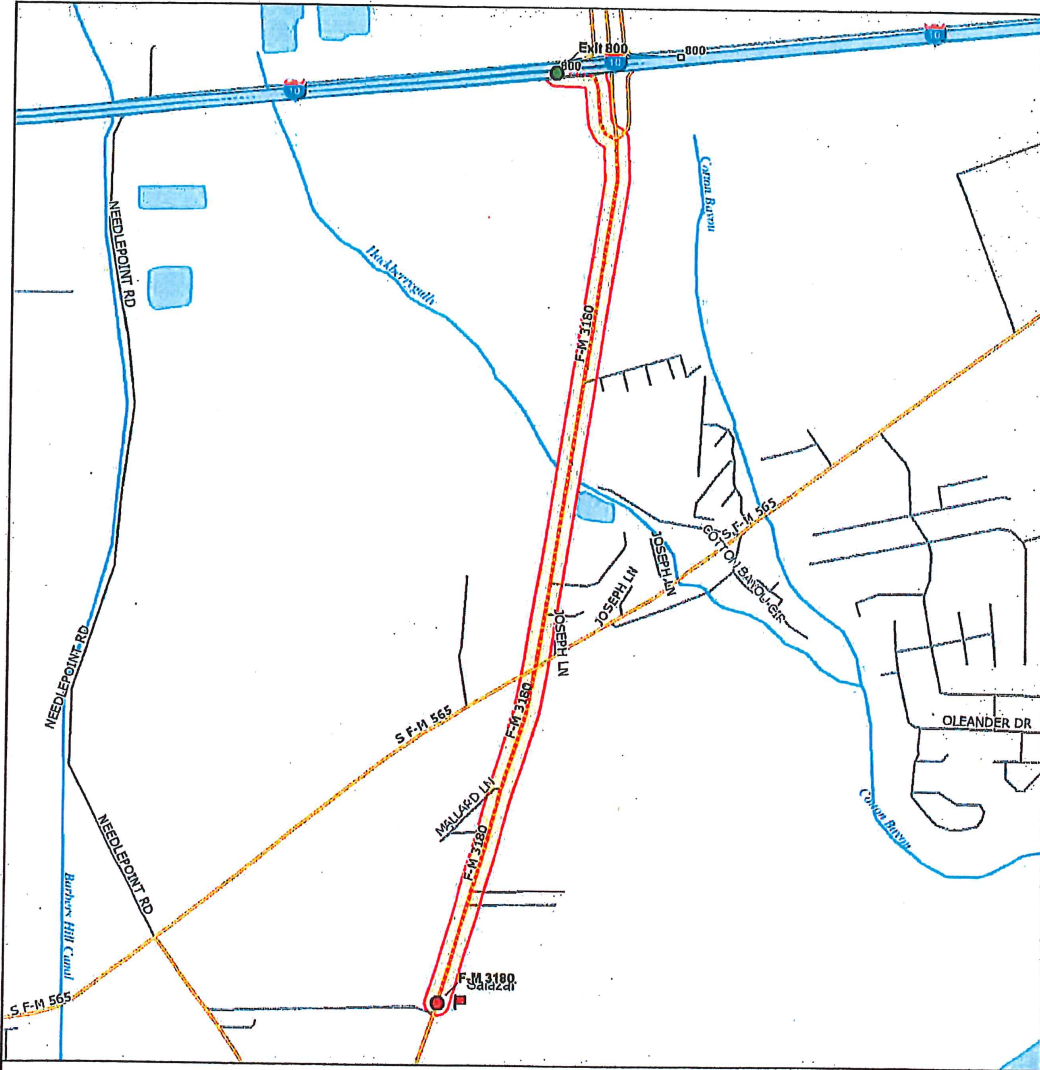
SWG 2017-00565

FEB 05 2019



Exit 800 to F-M 3180 - Overview

XMap® 7



Trip Distance: 3.06 mi

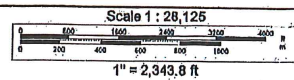
Trip Time: 00:05:08

Start: Exit 800

Total Stops: 0

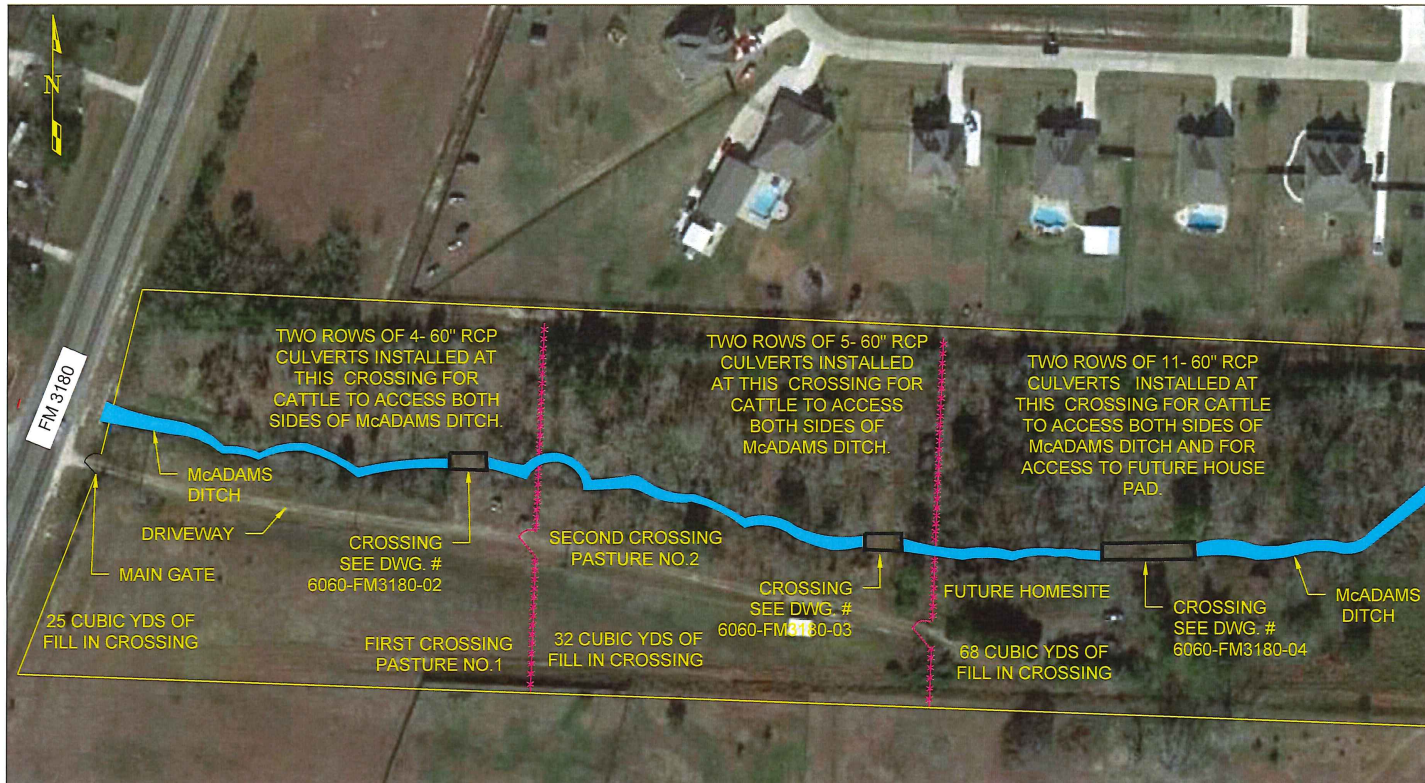
Finish: F-M 3180

Data use subject to license.
© DeLorme. XMap® 7.
www.delorme.com



SWG 2017-00565

FEB 05 2019



DIRECTIONS TO PROPERTY:

STARTING POINT FROM I-10E, AT EXIT 800
 GO STRAIGHT EAST ON I-10E, TURN RIGHT ON TO WEST RAMP AT
 EXIT 800. (MILE 0.00)
 KEEP RIGHT (SOUTH-SOUTH EAST FOR 0.10 MILES ON RAMP.
 GO STRAIGHT SOUTH ON TO FM3180 FOR 0.24MILES.
 CONTINUE SOUTH TO 6060 FM3180 FOR AN ADDITIONAL 2.73 MILES.
 TOTAL DISTANCE FROM EXIT 800 TO FINISH IS 3.06 MILES.

ISSUED FOR APPROVAL

DATE	DRAWN BY
1/23/2019	GS

RAMIRO SALAZAR JR.
 713-208-3375

SCALE: AS SHOWN

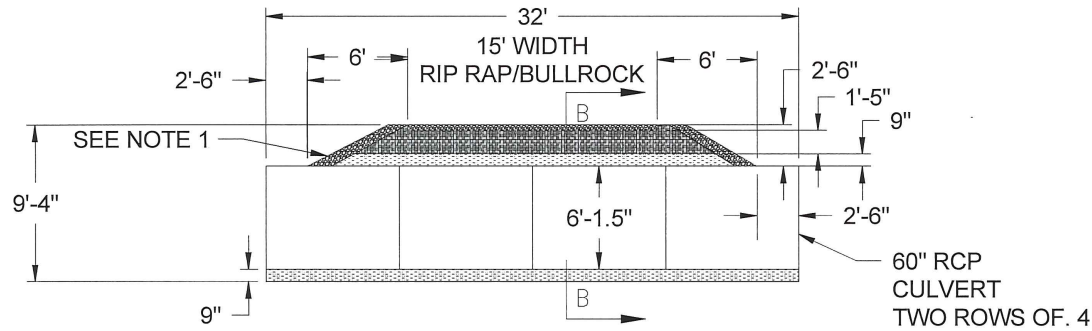
DATE: 1/15/2019

6060 FM 3180
 BAYTOWN, TX 77523

PLAN VIEW
 PROPOSED CULVERT
 LOCATION

DWG. # 6060-FM3180-01

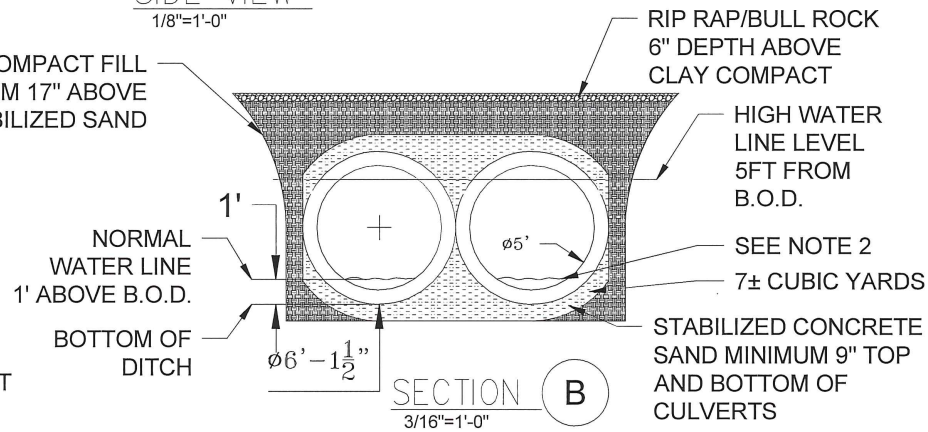
FEB 05 2019



SIDE VIEW
 1/8"=1'-0"

NOTES:

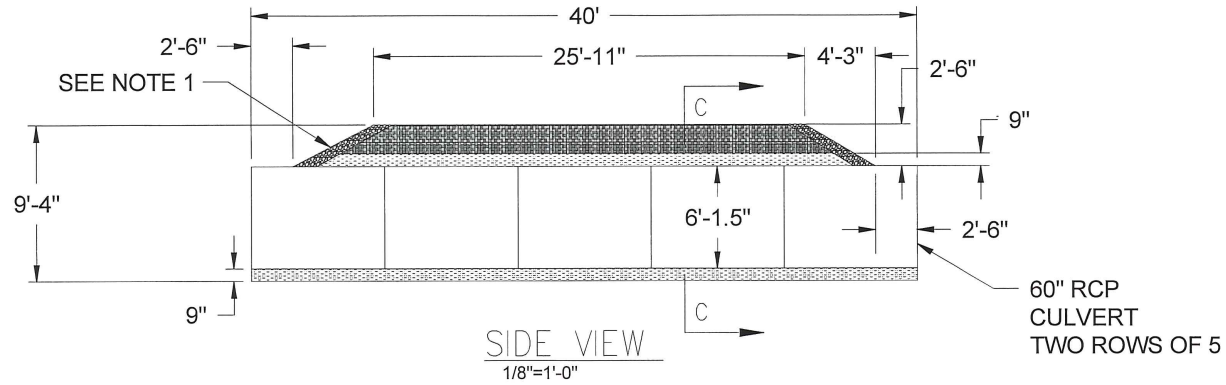
1. 8" THICK RIP RAP TO BE ADDED FOLLOWING APPROVAL OF DESIGN TO BOTH ENDS OF SLOPING BANK. ALL FUTURE IMPROVEMENTS ARE ON HOLD PENDING APPROVAL.
2. NORMAL WATER LINE AT 1FT ELEVATION AND HIGH WATER LINE IS AT 5FT ELEVATION FROM BOTTOM OF McADAMS DITCH.
3. DRAINAGE DESIGN SHALL ADHERE TO CHAMBERS COUNTY DRAINAGE CRITERIA. REFERENCE EXHIBIT #6-2.



SECTION B
 3/16"=1'-0"

ISSUED FOR APPROVAL		6060 FM 3180 BAYTOWN, TX 77523
DATE	DRAWN BY	
1/23/2019	GS	SIDE VIEW OF FIRST CROSSING AND DETAIL OF SOIL AROUND CULVERT
RAMIRO SALAZAR JR. 713-208-3375		
SCALE: AS SHOWN		
DATE: 1/15/2019		DWG. # 6060-FM3180-02

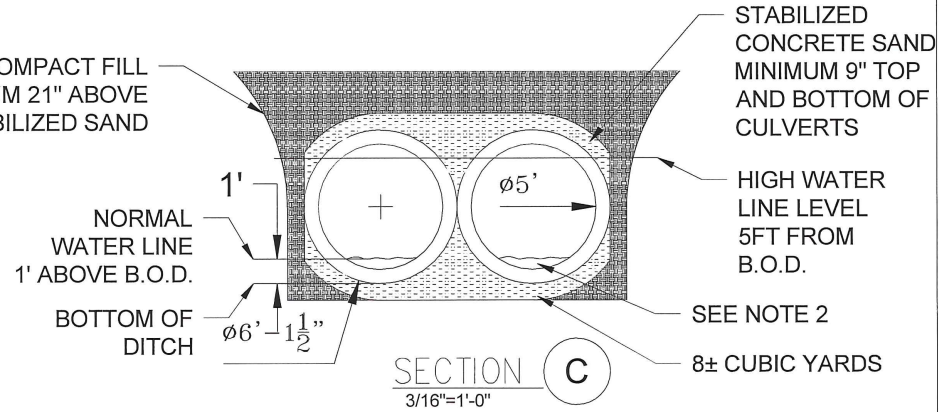
FEB 05 2019



SIDE VIEW
 1/8"=1'-0"

NOTES:

1. 8" THICK RIP RAP TO BE ADDED FOLLOWING APPROVAL OF DESIGN TO BOTH ENDS OF SLOPING BANK. ALL FUTURE IMPROVEMENTS ARE ON HOLD PENDING APPROVAL.
2. NORMAL WATER LINE AT 1FT ELEVATION AND HIGH WATER LINE IS AT 5FT ELEVATION FROM BOTTOM OF McADAMS DITCH.
3. DRAINAGE DESIGN SHALL ADHERE TO CHAMBERS COUNTY DRAINAGE CRITERIA. REFERENCE EXHIBIT #6-2.



SECTION C
 3/16"=1'-0"

ISSUED FOR APPROVAL		6060 FM 3180 BAYTOWN, TX 77523
DATE	DRAWN BY	
1/23/2019	GS	SIDE VIEW OF SECOND CROSSING AND DETAIL OF SOIL AROUND CULVERT
RAMIRO SALAZAR JR. 713-208-3375		
SCALE: AS SHOWN		
DATE: 1/15/2019		DWG. # 6060-FM3180-03

